

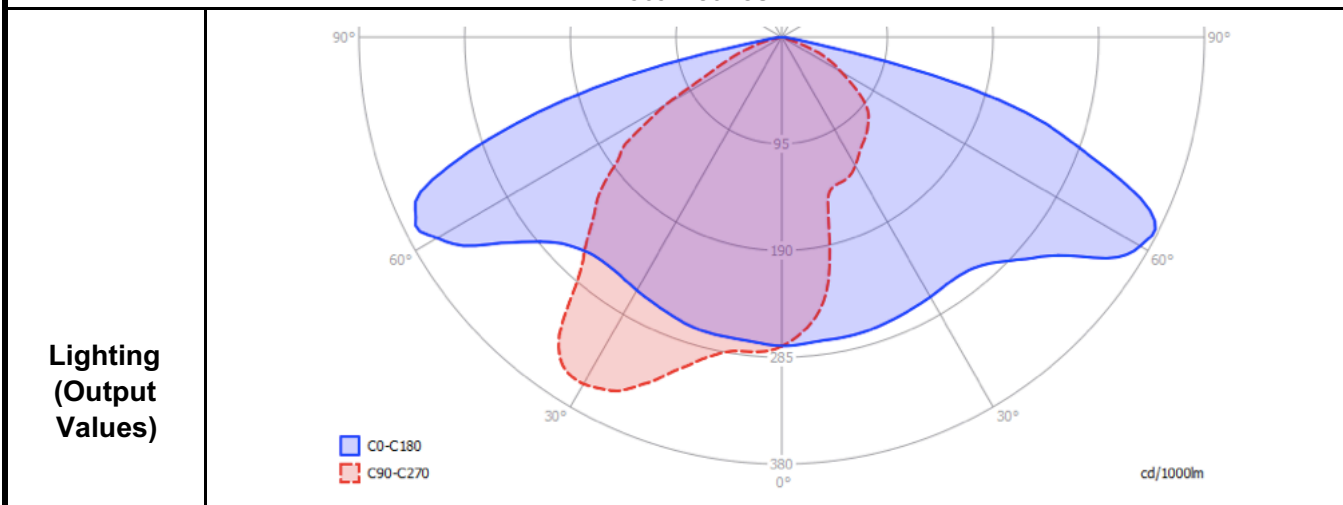


**'NEW FEATURE'**  
SETA\_HP Series



<b>Product Code</b>	<b>Product Model and Type</b>	SETA_HP 78-121W
<b>Electrical (Input Value)</b>	Power (Watt)	78-82-95-121
	Voltage (VAC)	100-277 VAC
	Power Factor (PF)	≥ 0.95
	Amper (A)	Max. 700mA
	Frequency Interval (Hz)	50/60 Hz
	Driver Brand	GigaTera
	Driver Origin	Designed in Korea
	Maximum Load THD (Total Harmonic Distortion) Value	20%
	Surge Protection (kV) (Inside Driver)	6kV
	Driver Lifetime	50,000 Hours
	Driver Efficiency	≥ %94
	Driver Case Temperature under Operation	39.3°C (@25°C Ambient)
	Driver Case Temperature under Operation	90°C
	Surge Protection (kV)	20kV
Control Type (Optional)	Wireless Zigbee, 1-10V, Autodimming, Half Night Switch (HNS)	

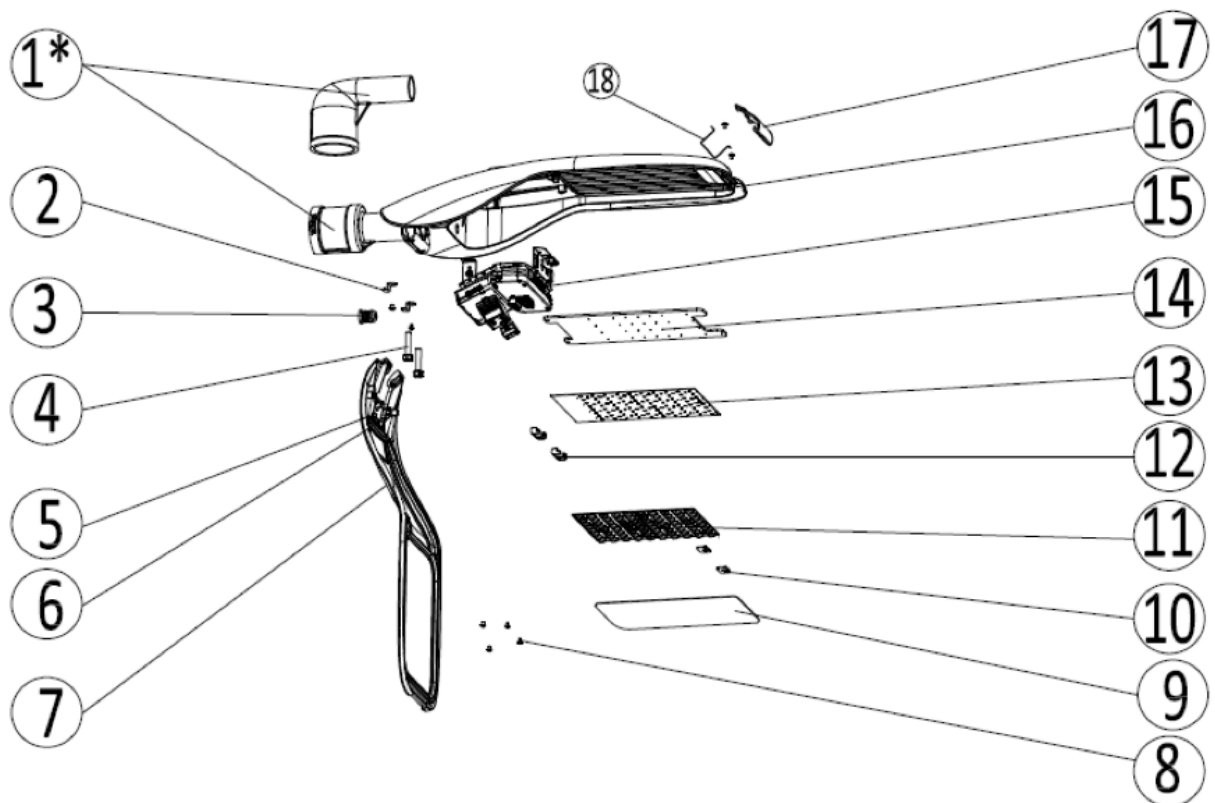
**Photometrics**



**Lighting (Output Values)**

Total Lumen Output	10,530 - 11,070 - 12,825 - 16,335lm ±10%
Lumen Efficacy (Lumen/Watt)	>135lm/w
Color Temperature (Kelvin)	4000K (5700K, 3000K)
Color Rendering Index (Ra)	≥ 70
Lens, Reflector Material	GigaTera Lens
UGR Rating	< 30
Beam Angle	120° Horizontal - 50° Vertical

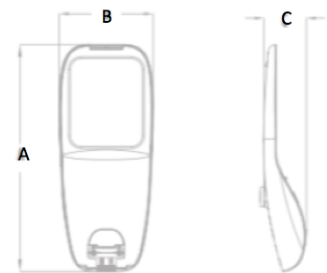
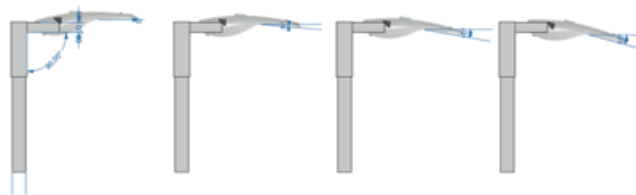
## EXPLODED VIEW OF THE PRODUCT PARTS



NO	DEFINITION	PIECE
1	POLE HOLDER (OPSIYONEL)	1
2	BOTTOM FIXING BRACKET	2
3	METAL RAKOR	1
4	SCREW M10X50 8.8 720H	2
5	BOTTOM CAPS PLASTIK	1
6	SPRIT LEVEL	1
7	BOTTOM AL ROAD (RAL 7040)	1
8	SCREW M3X6.5 TAPTITE ROHS	20
9	GLASS LED TEMPERED	1
10	PCP METAL FIXING BRACKET	2
11	LED LIGHTING LENS	20
12	PLASTIC CLIPS	2
13	PCB 001	1
14	PCB PLATE	1
15	POWER SUPPLY	1
16	TOP AL ROAD (RAL 7040)	1
17	METAL CLIPS	1
18	CLIPS WIRE ROADLIGHT	1

<b>General Information</b>	Luminaire Lifetime	Min. 50,000 Hours
	Luminaire Warranty	5 YIL
	Luminaire Maximum Operational Temperature	+50 °C
	Luminaire Minimum Operational Temperature	-40 °C
	L70B50 Economical Lifetime	Min. 50,000 Hours
	LED Chip Brand	Cree
	LED Chip - Quantity	High Power LED - 60pcs (70/82w) / 72pcs (95w) / 80pcs (108/121w)
	Amper Level (Maximum Rating)	1500mA
	Amper Level used for Luminaire Design	700mA
<b>Mechanical Values</b>	PCB Material	Non-flammable PCB
	PCB Thermal Conductivity (W/mK)	≥ 2
	Luminaire Front Glass Type and IK Level	Tempered Glass (4.0 mm) - IK08
	Luminaire Heatsink Material	Aluminium Injection
	Luminaire Heatsink Paint Type	Powder Coating - Gray
	Detailed Information for Installation	35-60mm Pole Diameter (60-76mm Extra Adaptor Available)
	IP Level	66
	Dimensions: Width x Length x Height (mm) - Weight (kg)	301x729.6x136mm - 7.8kg
	Box Dimensions	350x790x195mm
	Quantity per Container 20ft / 40ft	210 / 420 pcs
	Pallet Dimensions - Width - Legth - Height (cm)	120 x 100 x 113cm
Total Quantity over Pallet / Total Weight	21 adet / 164kg	

0°, 5°, 10°, 15° Tilt Angle Adjustable



<b>Wireless Dimming Values</b>	Wireless Control Type	Zigbee (Optional)
	Input Voltage	15 Vdc
	Max. Electricity Consumption	0.36W (@15 Vdc)
	Standard	2.4 Ghz - IEEE 802.15.4
	Network	Mesh
	RF Tx Power	Max. +8 dBm (Tip. 5 dBm)
	Data Transfer Speed	250 kbps
	Security	128 bit AES Encryption Algorithm
	Dimming	PVM, 0-10 Vdc
Antenna Type	Omni , 2 dBi	

<b>Certifications</b>	Certifications (Country of Origin)	CE, ENEC, EMC (Europe)
-----------------------	------------------------------------	------------------------



**GigaTera**<sup>®</sup>  
beyond light

**GigaTera Inc.**

HQ Office: 3 Dongtan Sandan, 6 Gil Bang Gyo Ri  
Dongtan Myeon, Hwaseong City, Gyeonggi Do, Korea

W: www.gigateraled.com.tr  
E: ledsales@gigateraled.com

**GigaTera Aydınlatma San. ve Tic. A.Ş.**

Turkey Office: Soğanlık Yeni Mah. Balıkesir Cad. Uprise Elite  
C1AB Blok Kat:28 No:242, 34880 Kartal, İstanbul, Türkiye

T/F: +90 216 999 3578

W: www.gigateraled.com.tr  
E: info@gigateraled.com.tr